



**Preliminary
Product Sheet**

Hyperspectral Pan and Tilt Scanner



The Hyperspectral Pan and Tilt Scanner includes a heavy-duty pan/tilt module, a mounting bracket for VIS/VNIR, NIR or SWIR camera and appropriate mechanical adaptors, cables and power supply. The scanner software controls the scanner movement and camera data collection.

The pan and tilt software allows the user to view live camera data, control the pan and tilt module, set up automated scanning and adjust camera settings such as frame rate and integration time, all from one interface. The pan and tilt control allows the user to freely move the camera, setup scanning limits and repeatedly scan an area. The scripted scanning control allows a user to iterate through tilt positions when scanning a region. Data may be stored in an ENVI-compatible .RAW in several modes. Scan mode synchronizes the endpoints of the pan with the endpoints of data collection, useful for measuring a scene. Free mode stores data from the camera until the user hits "stop". Frame-limit mode collects a user-specified number of frames, or until the user presses "stop". Free and Frame-limit modes are useful for collecting white and dark reference files, which are often necessary for data analysis.

Applications

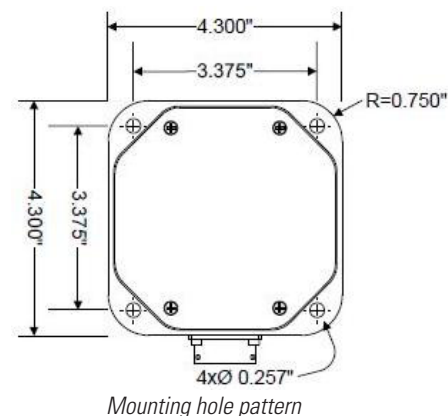
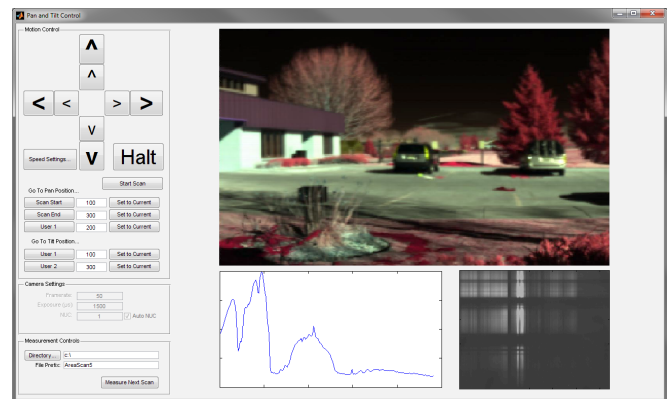
The hyperspectral pan and tilt scanner is ideal for industrial monitoring and outdoor measurements that scan objects along the horizon, such as crops, from masts, observation points, or a tripod.

Features

- Rugged construction
- Camera mounting bracket
- Camera control software

Scanning Options

- Single sweep
- Multiple sweep
- Continuous sweep
- Sweep list



Ordering Information

MRC-920-035 Hyperspectral Pan and Tilt Scanner – VIS/VNIR
MRC-920-036 Hyperspectral Pan and Tilt Scanner – NIR
MRC-920-037 Hyperspectral Pan and Tilt Scanner – SWIR

MRC-211-003-07 Heavy Duty Tripod for VNIR and NIR Cameras
MRC-211-003-08 Adaptor for Pan and Tilt Scanner